

## STANDARD COLOURS - Gloss



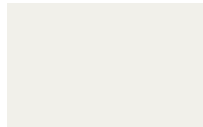
**Jet Black**  
RAL 9005



**Iron Grey**  
RAL 7011



**Nobel**  
RAL 7004



**Floral White**  
RAL 9016



**Tacao**  
RAL 1034



**Sunflower**  
RAL 1028



**Copper Brown**  
RAL 8004



**Orange**  
RAL 2008



**Scarlet**  
RAL 3024



**Maroon**  
RAL 3011



**Sky Blue**  
RAL 5015



**Navy**  
RAL 5019



**Sapphire**  
RAL 5002



**Asparagus**  
RAL 6021



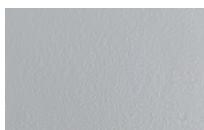
**Lime**  
RAL 6018



**Eden**  
RAL 6035

## SPECIALTY COLOURS

### Matte - Fine Texture



**Silver Sandtex**  
RAL 7047



**Gunmetal Sandtex**  
RAL 9004



**Black Sandtex**  
RAL 9005

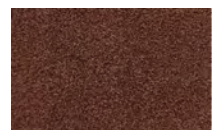
### Metallic Texture



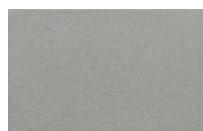
**White Aluminum**  
RAL 9006



**Granite Grey**  
RAL 7024



**Aged Rust**  
RAL 8029



**Sparkle Silver**  
RAL 7023



**Hammerstone**  
RAL 9005

*\* Specialty colours may require minimum order quantity and an upcharge. Please consult your sales representative for more information*

*\* Metal colour options presented on this chart may vary on difference monitor settings. For an accurate color, texture, and finishing assessment, it is recommended to contact Canaan for samples.*



## Composite Wood

Wood-compostie materials do not corrode, and are resistant to rot and decay. Canaan's engineered wood features a co-extruded shield encasing all four sides around its core , providing scratch, stain, and fade resistance.

---

CONTEMPORARY , ELEGANCE , REFINED

## Recycled Plastic Lumber

Long lasting and virtually maintenance free, our recycled plastic(RP) lumber is impervious to rot, mildew, insects, moisture and other decay, making it a perfect alternative to wood furniture for any environmentally-conscious organization.

