

## POWDER COATING

### STANDARD COLORS - Gloss



**Jet Black**  
RAL 9005



**Iron Grey**  
RAL 7011



**Signal Grey**  
RAL 7004



**Traffic White**  
RAL 9016



**Pastel Yellow**  
RAL 1034



**Melon Yellow**  
RAL 1028



**Copper Brown**  
RAL 8004



**Bright Red Orange**  
RAL 2008



**Luminous Red**  
RAL 3024



**Maroon**  
RAL 3011



**Sky Blue**  
RAL 5015



**Capri Blue**  
RAL 5019



**Ultramarine Blue**  
RAL 5002



**Pale Green**  
RAL 6021



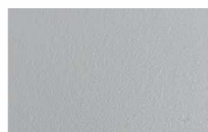
**Yellow Green**  
RAL 6018



**Pearl Green**  
RAL 6035

### SPECIAL COLORS

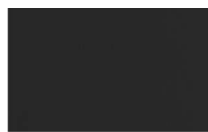
#### Matte - Fine Texture



**Silver Sandtex**



**Gunmetal Sandtex**



**Black Sandtex**

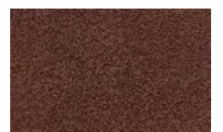
#### Metallic Texture



**White Aluminum**



**Granite Grey**



**Aged Rust**



**Sparkle Silver**



**Hammerstone**

\* Some standard colors may require a minimum order, and additional charges may apply to special colors. Please consult your sales representative for more information.

\* Colors presented in the chart vary from difference monitor settings. For an accurate color and texture assessment, it is recommended to contact Canaan for samples at [sales@canaansf.com](mailto:sales@canaansf.com)

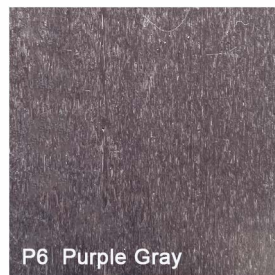
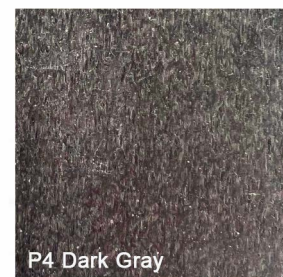
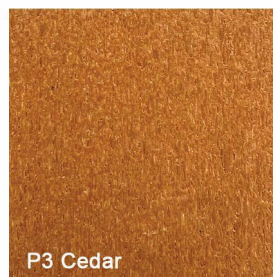
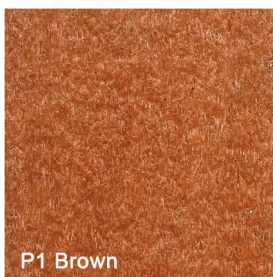


## Composite Wood

Wood-composite lumbers do not corrode and are resistant to rot and decay.

## Recycled Plastic Lumber

Long lasting and virtually maintenance free. Our recycled plastic lumber is impervious to rot, mildew, insects, moisture and other decay, making it a perfect alternative to wood furniture for any environmentally-conscious organization.



Colors presented in the chart vary from difference monitor settings. For an accurate color and texture assessment, it is recommended to contact Canaan for samples at [sales@canaansf.com](mailto:sales@canaansf.com)