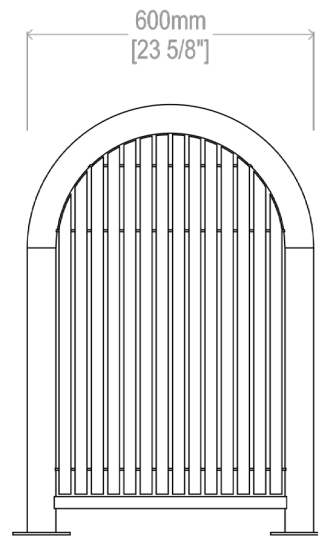


Front View



Side View

Capacity: L380 x W 460 x H 490 = 23 Gal x 2

Length: 39 3/8" / 1000 mm Width: 23 5/8" / 600 mm Height: 35 3/8" / 900 mm Weight: 116.8 lbs. / 53 kg

**Materials:**

Constructed with Galvanized Steel.

**Finish:**

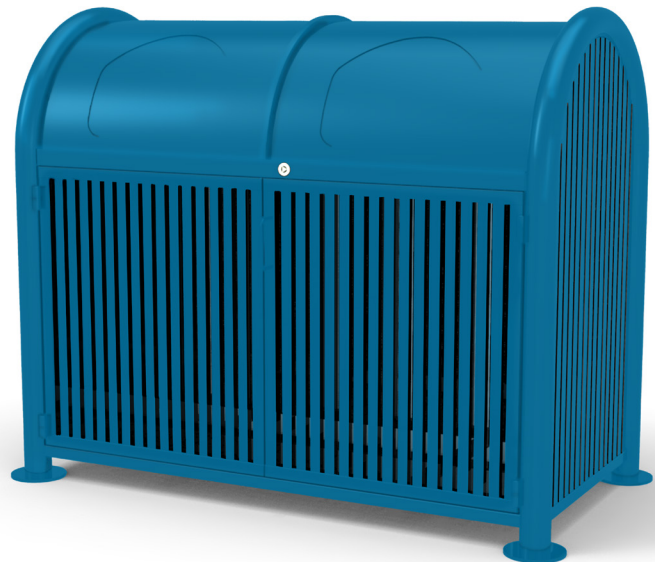
Steel components are electrocoated with anti-corrosion treatment and finished with UV resistant Canaan 5 Steps Powder Coating electrostatically.

**Installation:**

Delivered pre-assembled and surface mounted: holes are pre-drilled in each foot for securing to base.

**Options:**

- Custom openings
- Custom label
- Powdercoat color
- Additional bin
- Push flap



**Proprietary and confidential**

All the information contained in this drawing is the property of Canaan Inc. Reproduction of the drawing in whole or in part is prohibited without the written consent of Canaan Inc. Copyright © 2016 Canaan Inc. All rights reserved.

**Unless otherwise specified**

All measurements are in mm; all measurements are also preliminary and may vary from final plans. We reserve the right to improve, alter or discontinue specifications without notice.

TF: 1-877-305-6638  
Fax: 1-866-806-2355  
Email: info@canaansf.com  
www.canaansitefurnishings.com